



City of Atwater

GENERAL PLAN UPDATE

Newsletter 1 | January 2024

www.Atwater.Generalplan.org



YOUR INPUT IS NEEDED TO PLAN FOR ATWATER'S FUTURE!

The City has Embarked on an Exciting and Challenging Process to Update its General Plan!

The General Plan is a long-range planning document that is considered the city's "constitution" or blueprint, because it guides growth, traffic patterns, housing, and resource conservation. The General Plan is the city's guiding policy document for future development decisions related to land use, community design, mobility, economic development, fiscal sustainability, public services, and natural and historic resources. The city's General Plan will reflect community goals and values and serve the city for the next 20 years.

Tell Us Your Vision!

The City of Atwater wants to hear from its residents, businesses, and employees to make sure that the General Plan addresses current issues of local concern and provides a vision for the future that is consistent with the desires of the community.

How Do You Envision The Future Of Atwater?

A thriving active community? New places to shop and dine? More walking paths and bike facilities? Different housing choices? Increased business opportunities? Protection for the City's historic and natural resources? There are many ways for you to participate! Attend one of our Visioning Workshops, visit the project website to fill out a survey, or contact the City of Atwater Planning Division. We look forward to hearing your ideas!

UPCOMING MEETINGS

Visioning Workshops

In January and February the General Plan Update's visioning workshops will take place. Members of the project team will introduce the community to the General Plan, and ask participants to share their ideas for the future of Atwater. This is an opportunity for you to help shape the city's land use patterns, economic development strategies, and key priorities for the next 20 years.

Workshop #1

Wednesday, January 31st, 2024 @ 6:00pm
Community Center, Multi-Purpose Room
760 E. Bellevue Rd, Atwater, CA 95301

Workshop #2

Wednesday, February 28th 2024 @ 6:00pm
City Council Chambers, Atwater City Hall
750 Bellevue Rd, Atwater, CA 95301

Take the Online Survey!

Click the link above to take the General Plan Online Survey and provide your feedback on key issues and challenges. Or visit:

www.atwater.generalplan.org

WHAT IS A GENERAL PLAN AND WHAT DOES IT ADDRESS?

The state of California requires every city and county in California to adopt a General Plan, which is the local government's long-term blueprint "for the physical development of the city and any land outside its boundaries that bears relation to its planning." General Plans are divided into elements based on specific topics. There are seven mandatory elements: land use, circulation, housing, conservation, open space, safety, and noise. State law allows local governments to organize and format their general plans however they desire, as long as the required topics or elements are addressed. The Atwater General Plan is expected to address the following topics:



Land Use

Establishes land use patterns and densities, and ensures that there are opportunities for growth to meet future needs, while protecting the city's lands and resources in such a way that the city's lifestyle is protected.



Circulation

Guides decisions for how people of all ages and abilities can safely and efficiently get around the community—including by car, bike, walking, and transit. It will also consider new transportation technology and trends.



Noise and Safety

Provides strategies and regulations aimed at ensuring the well-being of residents and the community by addressing potential hazards and promoting public safety.



Sustainability and Growth Mangement

Outlines strategies and policies aimed at fostering environmentally responsible practices, resource conservation, and resilient urban development.



Conservation and Open Space

Provides measures to protect and improve the city's natural, historic, cultural, and biological resources. Addresses the topic of local and regional parks, recreation and open space, including trails and scenic vistas.



Housing and Economic Development

Provides tools and comprehensive strategies to guide the sustainable growth of housing and foster economic vitality within a community.



Parks & Recreation and Environmental Justice

Identifies issues, under-served areas, potential policy solutions, and address Parks and Recreation resources which enhance the quality of life within the community.



Administration & Implementation

Outlines the organizational structure, policies, and procedures for effective governance and decision-making, providing a framework for the plan's execution.



Community Services & Facilities

Gives direction on community infrastructure and facilities and services including water supply, wastewater, flood control, waste and recycling, storm drainage and water quality, and public facilities.



WHAT IS THE PROCESS FOR THE GENERAL PLAN UPDATE?

The Atwater General Plan Update will take place over an approximately two-year period. The major steps in the Update process are as follows:

1 Document Existing Conditions - We Are Here!

Identify development patterns, natural resources, socioeconomic conditions, environmental constraints, and the regulatory environment for each topic.

2 Vision, Opportunities, and Land Use Alternatives

Identify the community's vision for Atwater's future, core values, and key opportunities and land use options.

3 Draft General Plan

Will comprise goals, policies, and actions that will guide future decisions related to land patterns, infrastructure, and services to ensure a high quality of life for residents and businesses.

4 Environmental Review

To analyze and minimize all potential environmental impacts, the city will prepare a Program-level Environmental Impact Report (EIR).

5 Adoption

The Final General Plan will be presented to the Planning Commission and the City Council at public hearings, with the City Council having the authority to adopt the document.

GENERAL PLAN DOCUMENTS

As the General Plan is prepared, a number of major documents will be available for public review and comment.

Existing Conditions Report

Provides a snapshot of the conditions, trends, and regulations that are influencing the city today. It will focus on development patterns, natural resources, economic conditions, environmental constraints, and demographics.

Draft General Plan

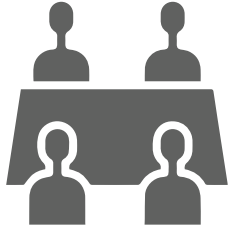
Contains the goals and policies that will guide future activities, services, and development in the City. It also identifies a full set of implementation measures that will ensure the policies are carried out.

Environmental Impact Report (EIR)

Will meet California Environmental Quality Act (CEQA) requirements. The decision makers will use it during their consideration of the draft General Plan to understand the potential environmental implications associated with it.

STAY INFORMED! GET INVOLVED!

A successful General Plan will reflect the community's priorities, and your input is needed to confirm the community's values and establish its vision. You can stay informed about and participate in the process in the following ways:



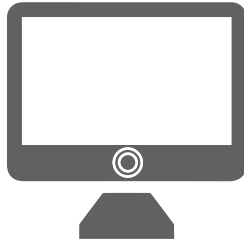
Visioning Workshops

Attend one or more Visioning Workshops and share your ideas for the vision and core values that will guide the update process and priorities for changes to Atwater's land use pattern and circulation systems!



Mailing List

If you would like to be added to the General Plan Update mailing list, please visit the website or contact the project team.



Project Website

Visit the General Plan website, www.atwater.generalplan.org, to take community surveys and find out more about future meetings, available background data, and the status of the project.

QUESTIONS FOR YOU TO CONSIDER

In anticipation of your involvement in the General Plan Update, please consider the following questions:

Assets

- What do you value most about Atwater?
- What makes this a special place to live or work?

Challenges

- What issues are facing the city that need to be addressed in the General Plan?

Vision

- What ideas do you have for the future of Atwater?
- What would make your community better?
- What three things would you like to see accomplished by 2045?

CONTACT THE PROJECT TEAM!

If you would like to provide comments and input on the General Plan Update process or be added to the project mailing list, please visit the website or contact us by mail, email, or by phone:

Tina Thurman

Executive Assistant
Community Development,
City of Atwater

750 Bellevue Road,
Atwater, CA 95301
209-357-6239
cthurman@atwater.org